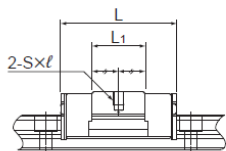
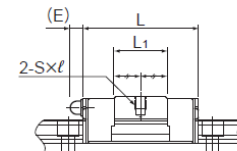


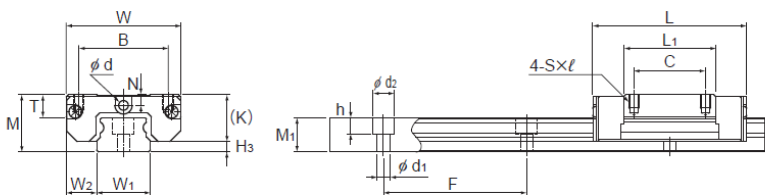
Model SRS-S, SRS-M i SRS-N



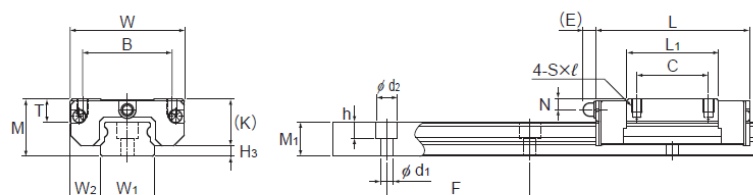
Model SRS15S



Model SRS15GS



Models SRS15M/N, 20M, 25M



Models SRS15GM/GN, 20GM, 25GM

Unit: mm

Model No.	Outer dimensions			LM block dimensions										LM rail dimensions					Basic load rating		Static permissible moment N-m*					Mass				
	Height M	Width W	Length L	B	C	S×ℓ	L ₁	T	K	N	E	Greasing hole d	Grease nipple	H ₃	Width W ₁	Width W ₂	Height M ₁	Pitch F	d ₁ ×d ₂ ×h	Length* Max	C	C ₀	M _A		M _B		M _C	LM block	LM rail	
																							1 block	Double blocks	1 block	Double blocks	1 block	kg	kg/m	
SRS 15S SRS 15GS	16	32	32	25	—	M3×3.5	14.7	6.5	13.3	3	—	3	—	PB107	2.7	15 ⁰ _{-0.02}	8.5	9.5	40	3.5×6×4.5	2000	4.50 4.01	3.39 4.24	9.54 12.6	77.5 92.7	9.54 12.6	77.5 92.7	24.1 30.1	0.033	0.96
SRS 15M SRS 15GM	16	32	43	25	20	M3×3.5	25.7	6.5	13.3	3	—	3	—	PB107	2.7	15 ⁰ _{-0.02}	8.5	9.5	40	3.5×6×4.5	2000	6.66 5.59	5.7 5.72	26.2 24.8	154 158	26.2 24.8	154 158	40.4 40.6	0.047	0.96
SRS 15N SRS 15GN	16	32	60.8	25	25	M3×3.5	43.5	6.5	13.3	3	—	3	—	PB107	2.7	15 ⁰ _{-0.02}	8.5	9.5	40	3.5×6×4.5	2000	9.71 8.27	8.55 11.9	59.7 82.3	312 433	59.7 82.3	312 433	60.7 84.5	0.095	0.96
SRS 20M SRS 20GM	20	40	50	30	25	M4×6	34	9	16.6	4	—	3	—	PB107	3.4	20 ⁰ _{-0.03}	10	11	60	6×9.5×8	1800	7.75 5.95	9.77 9.4	54.3 44.7	296 242	62.4 53.3	341 289	104 91.4	0.11	1.68
SRS 25M SRS 25GM	25	48	77	35	35	M6×7	56	11	20	5	—	4	—	PB1021B	5	23 ⁰ _{-0.03}	12.5	15	60	7×11×9	1800	16.5 13.3	20.2 22.3	177 181	932 962	177 181	932 962	248 255	0.24	2.6

Note) Since stainless steel is used in the LM block, LM rail and balls, these models are highly resistant to corrosion and environment. The SRS-G is equipped with uncaged, full-complement bearings. For the SRS15S/M/N, 20M, and 25M, if a grease nipple is required, please specify upon ordering. Using a greasing hole other than for greasing may cause damage.

Note) The maximum length under "Length * " indicates the standard maximum length of an LM rail. (See ■ 1-160.) Static Permissible Moment * 1 block: static permissible moment value with 1 LMblock Double blocks: static permissible moment value with 2 blocks closely contacting with each other

Model number coding

2	SRS20M	QZ	UU	C1	+220L	P	M	-II
No. of LM blocks used on the same rail	Model No.	With QZ Lubricator	Contamination protection accessory symbol (*1)	Radial clearance symbol (*2)	LM rail length (in mm)	Stainless steel LM rail	Accuracy symbol (*3)	Symbol for No. of rails used on the same plane (*4)
			Normal (No symbol)/Light preload (C1)	Normal (No symbol)/Light preload (C1)			Normal grade (No Symbol)/High accuracy grade (H)	
							Precision grade (P)	

(*1) See contamination protection accessory on **A1-494**. (*2) See **A1-70**. (*3) See **A1-82**. (*4) See **A1-13**.

Note) This model number indicates that a single-rail unit constitutes one set. (i.e., required number of sets when 2 rails are used in parallel is 2 at a minimum.) Those models equipped with QZ Lubricator cannot have a grease nipple. When desiring a grease nipple for a model attached with QZ, contact THK.