

# COMBINED NEEDLE ROLLER BEARINGS

WITH AXIAL BALL BEARINGS WITHOUT INNER RINGS



NKX

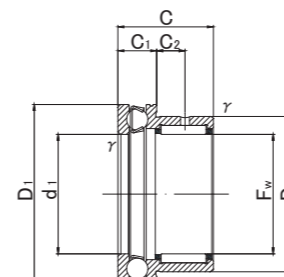
NKX.Z



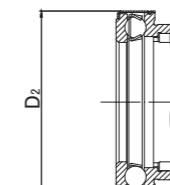
NKX



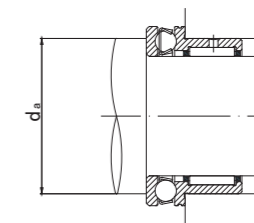
NKX.Z



NKX



NKX.Z



## NKX, NKX.Z TYPE

Shaft diameter (mm)	Designation		Dimensions (mm)									Standard mounting dimensions (mm)	Basic dynamic load rating		Basic static load rating		Limiting speed (Grease)*	Mass (g approx.)	Usable bearing designation		
	Open type	With dust cover	Fw	D	D1	D2	C	C1	C2	r <sub>s min</sub>	d1		da MIN	Radial	Axial	Radial			Axial	INNER RING	WITH INNER RING
														Cr N	Cor N	rpm			g (approx.)		
10	NKX10	—	10 +0.022	19	24	—	23	9	6.5	0.3	10	18	8 200	10 000	9 200	14 000	9 500	36	IR71016	NKXI 7	
	—	NKX10Z	10 +0.013	19	—	25	23	9	6.5	0.3	10		18	8 200	10 000	9 200			14 000	9 500	37.5
12	NKX12	—	12 +0.027	21	26	—	23	9	6.5	0.3	12	20	9 200	10 300	11 200	15 400	9 200	40.5	IR91216	NKXI 9	
	—	NKX12Z	12 +0.016	21	—	27	23	9	6.5	0.3	12		20	9 200	10 300	11 200			15 400	9 200	42
15	NKX15	—	15 +0.027	24	28	—	23	9	6.5	0.3	15	23	12 400	10 500	14 900	16 800	8 800	44	IR121516	NKXI 12	
	—	NKX15Z	15 +0.016	24	—	29	23	9	6.5	0.3	15		23	12 400	10 500	14 900			16 800	8 800	45.5
17	NKX17	—	17 +0.027	26	30	—	25	9	8	0.3	17	25	12 800	10 800	16 300	18 200	8 500	52	IR141717	NKXI 14	
	—	NKX17Z	17 +0.016	26	—	31	25	9	8	0.3	17		25	12 800	10 800	16 300			18 200	8 500	53.5
20	NKX20	—	20 +0.033	30	35	—	30	10	10.5	0.3	20	29	17 600	14 200	25 400	24 700	7 500	83	IR172020	NKXI 17	
	—	NKX20Z	20 +0.020	30	—	36	30	10	10.5	0.3	20		29	17 600	14 200	25 400			24 700	7 500	85.5
25	NKX25	—	25 +0.033	37	42	—	30	11	9.5	0.6	25	35	20 000	19 600	32 200	37 300	6 500	124.5	IR202520	NKXI 20	
	—	NKX25Z	25 +0.020	37	—	43	30	11	9.5	0.6	25		35	20 000	19 600	32 200			37 300	6 500	127.5
30	NKX30	—	30 +0.033	42	47	—	30	11	9.5	0.6	30	40	25 100	20 400	40 100	42 200	6 200	141.5	IR253020	NKXI 25	
	—	NKX30Z	30 +0.020	42	—	48	30	11	9.5	0.6	30		40	25 100	20 400	40 100			42 200	6 200	145
35	NKX35	—	35 +0.041	47	52	—	30	12	9	0.6	35	45	27 000	20 400	46 200	44 700	5 600	163	IR303520	NKXI 30	
	—	NKX35Z	35 +0.025	47	—	53	30	12	9	0.6	35		45	27 000	20 400	46 200			44 700	5 600	167.5
40	NKX40	—	40 +0.041	52	60	—	32	13	10	0.6	40	52	29 400	26 900	54 100	62 900	5 000	214	IR354020	NKXI 35	
	—	NKX40Z	40 +0.025	52	—	61	32	13	10	0.6	40		52	29 400	26 900	54 100			62 900	5 000	220
45	NKX45	—	45 +0.041	58	65	—	32	14	9	0.6	45	57	31 100	27 900	60 100	69 200	4 600	251	IR404520	NKXI 40	
	—	NKX45Z	45 +0.025	58	—	66.5	32	14	9	0.6	45		57	31 100	27 900	60 100			69 200	4 600	264.5
50	NKX50	—	50 +0.041	62	70	—	35	14	10	0.6	50	62	43 000	28 700	85 200	75 400	4 500	277	IR455025	NKXI 45	
	—	NKX50Z	50 +0.025	62	—	71.5	35	14	10	0.6	50		62	43 000	28 700	85 200			75 400	4 500	291.5
60	NKX60	—	60 +0.049	72	85	—	40	17	12	1	60	75	47 500	41 400	103 000	113 000	3 700	443	IR506025	NKXI 50	
	—	NKX60Z	60 +0.030	72	—	86.5	40	17	12	1	60		75	47 500	41 400	103 000			113 000	3 700	465.5
70	NKX70	—	70 +0.049	85	95	—	40	18	11	1	70	85	55 500	43 100	120 600	127 000	3 400	577	IR607025	NKXI 60	
	—	NKX70Z	70 +0.030	85	—	96.5	40	18	11	1	70		85	55 500	43 100	120 600			127 000	3 400	601

\* Suitable for oil lubrication. In case of grease lubrication, down to 70% of this value.