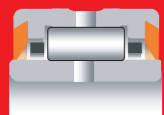


# MACHINED RING NEEDLE ROLLER BEARINGS

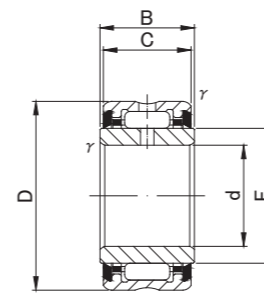
SEALED, WITH INNER RING



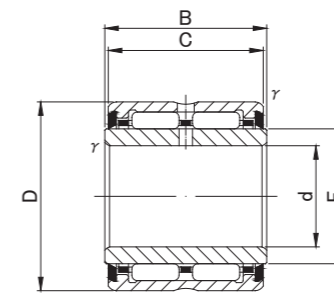
NA49UU, NA69UU (d ≤ 30)



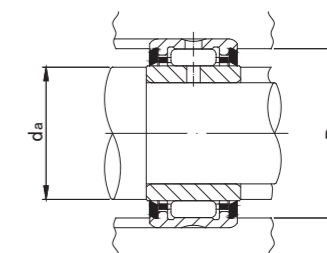
NA69UU



NA49UU, NA69UU (d ≤ 30)



NA69UU



## NA49UU, NA69UU, SEALED TYPE

Prepacked Grease

Shaft Diameter (mm)	Designation		Dimensions (mm)						Standard mounting dimensions (mm)			Basic dynamic load rating	Basic static load rating	Limiting speed (GREASE)	Mass	Usable bearing designation	
	NA 49UU	NA 69UU	d	D	C	B	r/s min	F	da		Da	Cr N	Cor N	rpm	g (approx)	OUTER RING	INNER RING
									MIN	MAX							
10	NA 4900UU	—	10 <sup>0</sup> <sub>-0.008</sub>	22	13	14	0.3	14	12	13	20	8 000	8 500	14 000	25	RNA4900UU	IRZ101414
12	NA 4901UU	—	12 <sup>0</sup> <sub>-0.008</sub>	24	13	14	0.3	16	14	15	22	8 400	9 300	12 000	28	RNA4901UU	IRZ121614
	—	NA 6901UU	12 <sup>0</sup> <sub>-0.008</sub>	24	22	23	0.3	16	14	15	22	15 600	20 400	12 000	46	RNA6901UU	IRZ121623
15	NA 4902UU	—	15 <sup>0</sup> <sub>-0.008</sub>	28	13	14	0.3	20	17	19	26	9 600	11 700	9 500	36	RNA4902UU	IRZ152014
	—	NA 6902UU	15 <sup>0</sup> <sub>-0.008</sub>	28	23	24	0.3	20	17	19	26	18 400	27 100	9 500	63	RNA6902UU	IRZ152024
17	NA 4903UU	—	17 <sup>0</sup> <sub>-0.008</sub>	30	13	14	0.3	22	19	21	28	10 300	13 100	8 500	40	RNA4903UU	IRZ172214
	—	NA 6903UU	17 <sup>0</sup> <sub>-0.008</sub>	30	23	24	0.3	22	19	21	28	19 800	30 600	8 500	69	RNA6903UU	IRZ172224
20	NA 4904UU	—	20 <sup>0</sup> <sub>-0.010</sub>	37	17	18	0.3	25	22	24	35	17 900	20 500	7 500	78	RNA4904UU	IRZ202518
	—	NA 6904UU	20 <sup>0</sup> <sub>-0.010</sub>	37	30	31	0.3	25	22	24	35	33 000	44 500	7 500	140	RNA6904UU	IRZ202531
25	NA 4905UU	—	25 <sup>0</sup> <sub>-0.010</sub>	42	17	18	0.3	30	27	29	40	20 300	25 100	6 500	93	RNA4905UU	IRZ253018
	—	NA 6905UU	25 <sup>0</sup> <sub>-0.010</sub>	42	30	31	0.3	30	27	29	40	39 200	58 600	6 500	162	RNA6905UU	IRZ253031
30	NA 4906UU	—	30 <sup>0</sup> <sub>-0.010</sub>	47	17	18	0.3	35	32	34	45	21 600	28 400	5 500	106	RNA4906UU	IRZ303518
	—	NA 6906UU	30 <sup>0</sup> <sub>-0.010</sub>	47	30	31	0.3	35	32	34	45	40 100	63 100	5 500	185	RNA6906UU	IRZ303531
35	NA 4907UU	—	35 <sup>0</sup> <sub>-0.012</sub>	55	20	21	0.6	42	39	41	51	30 100	46 300	4 500	179	RNA4907UU	IRZ354221
	—	NA 6907UU	35 <sup>0</sup> <sub>-0.012</sub>	55	36	37	0.6	42	39	41	51	51 600	92 600	4 500	320	RNA6907UU	IRZ354237
40	NA 4908UU	—	40 <sup>0</sup> <sub>-0.012</sub>	62	22	23	0.6	48	44	47	58	37 200	58 300	4 000	245	RNA4908UU	IRZ404823
	—	NA 6908UU	40 <sup>0</sup> <sub>-0.012</sub>	62	40	41	0.6	48	44	47	58	63 700	116 700	4 000	440	RNA6908UU	IRZ404841
45	NA 4909UU	—	45 <sup>0</sup> <sub>-0.012</sub>	68	22	23	0.6	52	49	51	64	38 800	63 400	3 500	290	RNA4909UU	IRZ455223
	—	NA 6909UU	45 <sup>0</sup> <sub>-0.012</sub>	68	40	41	0.6	52	49	51	64	66 700	126 500	3 500	510	RNA6909UU	IRZ455241
50	NA 4910UU	—	50 <sup>0</sup> <sub>-0.012</sub>	72	22	23	0.6	58	54	57	68	41 300	71 100	3 500	300	RNA4910UU	IRZ505823
	—	NA 6910UU	50 <sup>0</sup> <sub>-0.012</sub>	72	40	41	0.6	58	54	57	68	70 800	142 200	3 500	530	RNA6910UU	IRZ505841