

**Koła zębate o zębach skośnych SERIA 320**  
Helical tooth system SERIES 320

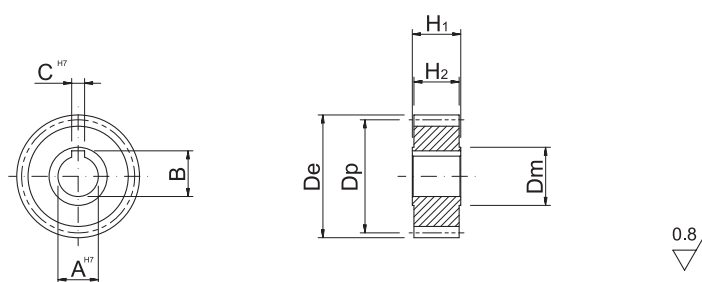
**Q6 - 20MnCr5**  
**Piasta krótka Short Hub**



Koła zębate Gears

Klasa dokładności / Quality: **6e24** - Materiał / Material: **20MnCr5**  
Obróbka cieplna: hartowanie powierzchniowe (60 HRC)  
Heat-treatment: case-hardening 60 HRC

Uzębienie skośne: **19° 31' 42"** Lewoskrętne  
Helical tooth system: **19° 31' 42"** Left-hand  
Powierzchnia: szlifowana / Surface: ground



SYMBOL ITEM CODE	M	Z	De	Dp	CH7	B	AH7	H2	H1	Dmh8
1HG36L015016S	1,5	16	28,46	25,46	5	17,3	15	28	30	20
1HG36L015018S	1,5	18	31,64	28,64	5	17,3	15	28	30	22
1HG36L015020S	1,5	20	34,83	31,83	5	17,3	15	28	30	25
1HG36L015024S	1,5	24	41,19	38,19	8	28,3	25	28	30	32
1HG36L015030S	1,5	30	50,74	47,74	8	28,3	25	28	30	40
1HG36L015040S	1,5	40	66,66	63,66	12	43,3	40	28	30	58
1HG36L020016S	2	16	37,95	33,95	5	17,3	15	28	30	25
1HG36L020018S	2	18	42,20	38,20	5	17,3	15	28	30	30
1HG36L020020S	2	20	46,44	42,44	6	22,8	20	28	30	30
1HG36L020022S	2	22	50,69	46,69	8	28,3	25	28	30	36
1HG36L020024S	2	24	54,93	50,93	8	28,3	25	28	30	36
1HG36L020030S	2	30	67,66	63,66	8	28,3	25	28	30	36
1HG36L020040S	2	40	88,88	84,88	12	43,3	40	28	30	62
1HG36L025024S	2,5	24	68,66	63,66	8	28,3	25	28	30	36
1HG36L030020S	3	20	69,66	63,66	6	22,8	20	28	30	30
1HG36L030022S	3	22	76,03	70,03	8	28,3	25	28	30	36
1HG36L030024S	3	24	82,39	76,39	8	28,3	25	28	30	36
1HG36L030040S	3	40	133,32	127,32	12	43,3	40	28	30	62
1HG36L031020S	3,183	20	73,91	67,55	6	22,8	20	28	30	30
1HG36L031022S	3,183	22	80,67	74,30	8	28,3	25	28	30	36
1HG36L031024S	3,183	24	87,42	81,05	8	28,3	25	28	30	36
1HG36L031030S	3,183	30	107,68	101,32	8	28,3	25	28	30	36
1HG36L040020S	4	20	92,88	84,88	10	38,3	35	40	50	55
1HG36L040025S	4	25	114,10	106,10	10	38,3	35	40	50	55
1HG36L040030S	4	30	135,32	127,32	10	38,3	35	40	50	55
1HG36L040032S	4	32	143,81	135,81	10	38,3	35	40	50	55
1HG36L050020S	5	20	116,10	106,10	14	48,8	45	50	60	68
1HG36L050024S	5	24	137,32	127,32	14	48,8	45	50	60	68
1HG36L050025S	5	25	142,63	132,63	14	48,8	45	50	60	68
1HG36L050030S	5	30	169,15	159,15	14	48,8	45	50	60	68
1HG36L060020S	6	20	139,32	127,32	16	59,3	55	60	70	80
1HG36L060021S	6	21	145,69	133,69	16	59,3	55	60	70	80
1HG36L060024S	6	24	164,79	152,79	16	59,3	55	60	70	80
1HG36L060025S	6	25	171,15	159,15	16	59,3	55	60	70	80
1HG36L060030S	6	30	202,99	190,99	16	59,3	55	60	70	80
1HG36L080020S	8	20	185,76	169,76	20	79,9	75	80	100	110
1HG36L100020S	10	20	232,21	212,21	22	90,4	85	100	120	125