



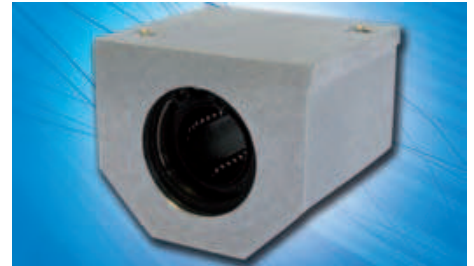
Linear units with standard ball bushings, relubrication

Linear units with standard ball bushings, closed casing

Due to their optimised design, the linear units of the LSE series with a relubrication system offer high precision in any type of installation.

A LSE linear unit consists of the following:

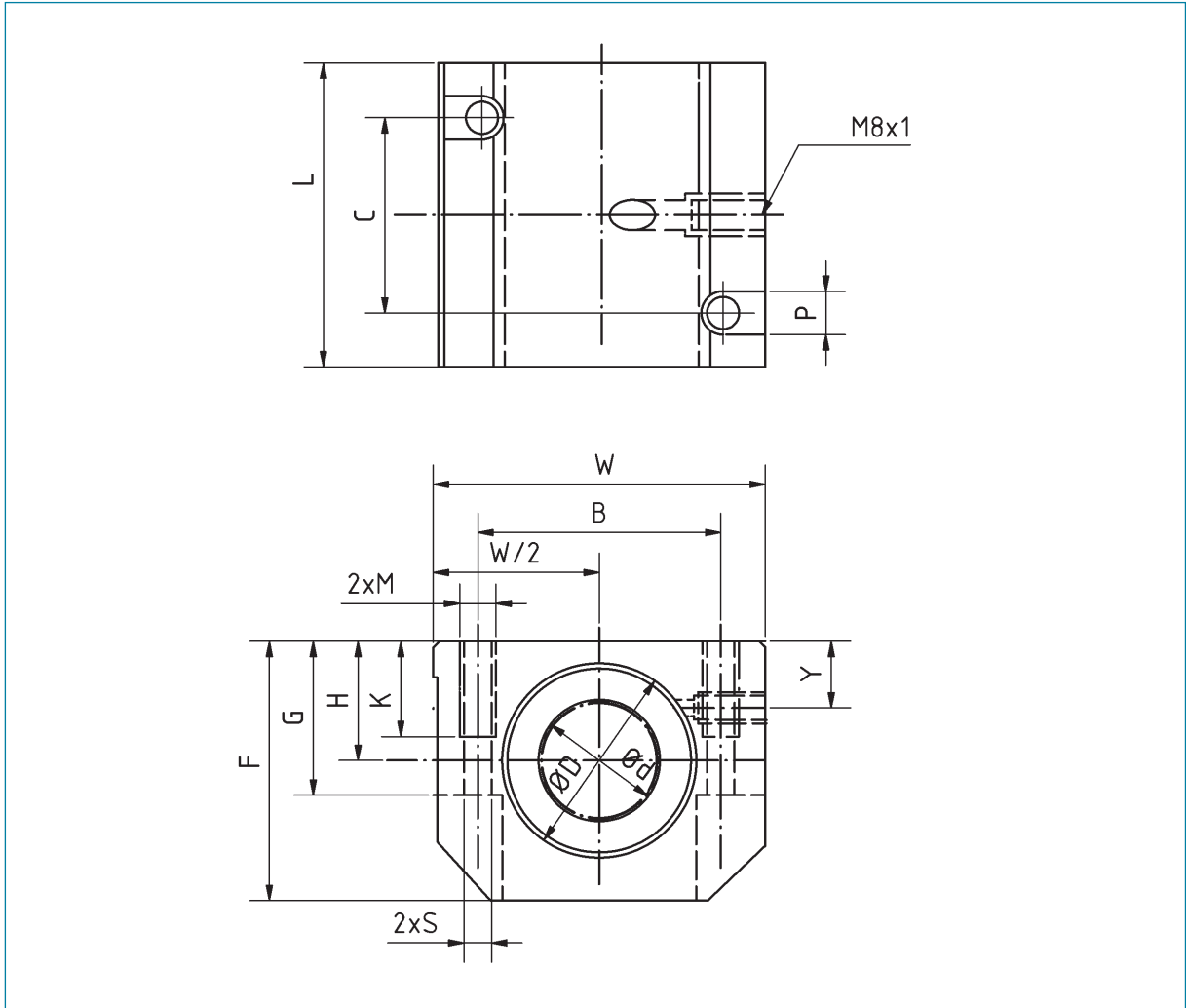
- casing (AlMgSi0,5)
- BBE standard ball bushings
- wiper seals made from NBR



The linear units offer substantial cost advantages to the user, because of reduced construction expense.

The unit construction allows easier integration into installations. Reduced unit weight is obtained by using high grade aluminium, allowing for greater accelerations and higher speeds.

Order reference	Dimensions [mm]										
	Ød	ØD H6	H +0,01 -0,02	W	L +0,3	F	G	Y	B	C	
LSE12UU	12	22	18	43	39	35	25	10	32	23	
LSE16UU	16	26	22	53	43	42	30	12	40	26	
LSE20UU	20	32	25	60	54	50	34	13	45	32	
LSE25UU	25	40	30	78	67	60	40	15	60	40	
LSE30UU	30	47	35	87	79	70	48	16	68	45	
LSE40UU	40	62	45	108	91	90	60	20	86	58	



Dimensions [mm]				dynamic load rating [N]	static load rating [N]	Weight [g]	Order reference
M	P	K	S				
M5	8	11	4,2	510	784	175	LSE12UU
M6	10	13	5,2	578	892	260	LSE16UU
M8	11	18	6,8	862	1 370	442	LSE20UU
M10	15	22	8,6	980	1 570	885	LSE25UU
M10	15	22	8,6	1 570	2 740	1330	LSE30UU
M12	18	26	10,3	2 160	4 020	2 570	LSE40UU